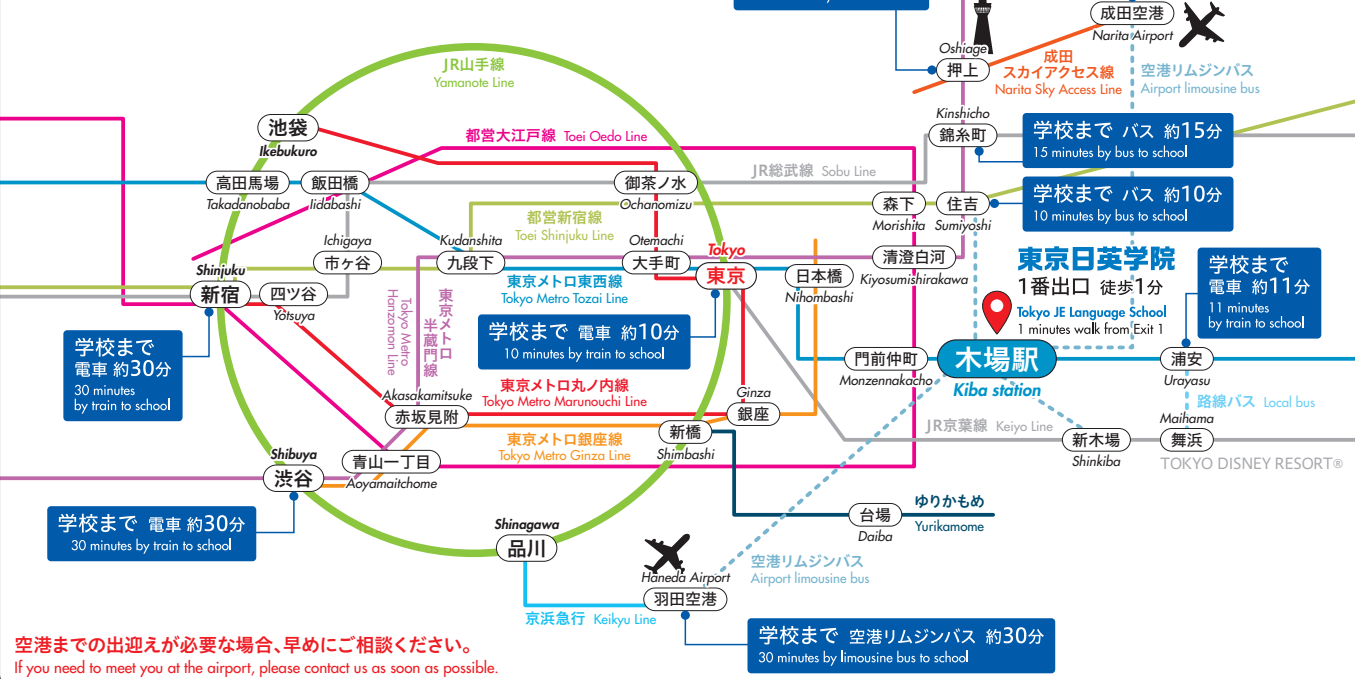


路線案内
ROUTE GUIDANCE

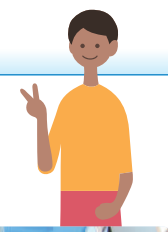


- 電車の場合**
- 東京メトロ東西線「木場駅」
 - ……………1番出口徒歩1分
- バスの場合**
- 東京都営バス
 - 東22番 (錦糸町駅前 - 東京駅北口)
 - 東07番 (錦糸町駅前 - 門前仲町)
 - ……………木場駅前バス停から徒歩3分、
 - 東陽三丁目駅から徒歩5分





東京日英の強み・特徴 - TOKYO JE'S STRENGTHS & UNIQUE FEATURES



POINT 1 都心で学ぶ! Study in the heart of Tokyo!

東京駅から約15分の中心部に位置し、最寄りの木場駅(東京メトロ東西線)からわずか1分と最高の立地です。東京木場公園に隣接し、近くには、深川不動尊、富岡八幡宮という有名な神社仏閣があります。木場は「東京の下町」と呼ばれ、古くからある日本の伝統が残る、活気あふれる地域で、日本文化や伝統を学ぶのに最適です。

Located in a prime area in the heart of Tokyo, it is 15 minutes from Tokyo Station and only 1 minute from the closest station, Kiba Station (on the Tokyo Metro Tozai subway line). Situated beside the Tokyo Kiba Park, popular Shinto shrines like the Fukagawa Fudo Shrine and Tomioka Hachiman Shrine are also nearby. Kiba is an old district of Tokyo which is called "shitamachi" and many old Japanese traditions are preserved, making it the perfect place to learn Japanese culture and traditions.

位于中心地区，距东京站约15分钟路程，距最近的木场站(东京地铁东西线)仅1分钟，有非常棒的地理位置。毗邻东京木场公园，附近有有名深川不动尊、富冈八幡宫的有名的神社佛阁。木场素有“东京下町”之称，是一个充满活力的地区，同时又保留了日本的古老传统，非常适合学习日本文化和传统。

Có vị trí tuyệt vời tại trung tâm thành phố cách ga Tokyo khoảng 15 phút, ga gần nhất là ga Kiba tuyến Tokyo Metro Tozai cách ga khoảng 1 phút. JE Tokyo nằm liền kề với công viên Kiba, ga bên cạnh có Fukagawa Fudosen và Tomioka Hachimangu là các ngôi đền thờ phật lớn nổi tiếng. Ga Kiba còn được gọi là "Phố buôn bán", là khu phố có truyền thống lâu đời còn sót lại tại Tokyo, nơi tràn trề sức sống. Rất thích hợp cho việc học văn hóa và truyền thống Nhật Bản.



木場駅から徒歩1分
1 minute walk from Kiba Station



校舎外観
Exterior of the school building



代表取締役
泉岡 春美

社長あいさつ - GREETINGS FROM THE HEADMASTER

本校は、開校以来35年以上の長い歴史のある日本語学校です。これまでに入学された学生は、中国、韓国、ベトナム、フィリピン、インド、ネパールなどのアジアの国々をはじめ、ロシア、キルギスなどのロシア語圏、また英語圏など多国にわたり、最近では両親が本校で勉強した学生もいます。この長い歴史と実績・信頼を礎に、学生の皆様が初めての日本留学でも、安心して勉強に励めるようサポートできるのが本校の強みです。学習面においては、より効果的な日本語学習ができるよう、状況に合わせて教材のデジタ

ル化、オンライン授業を行うなど経験豊富な講師陣、スタッフ、そして協力関係にある大学との連携により、充実した進学サポートを実施しています。さらに、日本での就職を希望される学生に対しては、本校から直接日本企業へ就職できるグループ企業も併設し就職のサポートもしており、入国から進学・就職という新たなステージまで留学生の皆さんに親身になって寄り添い、国際社会で活躍できる人材を育成しています。皆さんの入学を心からお待ちしております。

This Japanese language school was opened more than 35 years ago and has a long history. We have had students from everywhere around the world, mainly from China, South Korea, Vietnam, the Philippines, India, Nepal, and other Asian countries as well as Russian-speaking countries like Russia and Kyrgyzstan, and English-speaking countries. Recently we even had parents studying at this establishment. Our long history and track record of achievement and trustworthiness give us an edge in supporting foreign students to reliably pursue their first overseas education in Japan. In terms of learning resources, we are working on more effective ways to teach Japanese through the digitalization of our teaching material and holding online classes, in accordance with the situation at hand, as well as providing better support for entrance exams with the help of our experienced teachers, staff and collaborating universities. Additionally, we also have a subsidiary business that helps students who desire to work in Japan to directly seek employment in companies based in Japan, carefully guiding foreign students through each stage of entering Japan, graduating, and seeking employment, in order to nurture talented individuals who can work on the international stage. We eagerly await your enrollment.

本校は建校以来35年以上歴史の日本語学校。到目前为止，在校的学生包括中国、韩国、越南、菲律宾、印度、尼泊尔等亚洲国家，俄罗斯、吉尔吉斯等俄语圈，另外有英语圈等多个国家，近还有父母也是在本校毕业的學生。在这漫长的历史、实绩和信賴的基础上，本校的优势在于，學生們即使是第一次來日本留學，也能鼓勵學生們安心地學習。和學習方面，為了能更有效地學習日語，根據情況將教材數字化，在線上授課等經驗豐富的講師陣容、工作人員而且與有合作關係的企業合作，實現充實的升學支援。此外，對於希望在日本就業的學生，本校有可以直達到日本企業就業的集團公司，並提供就業支持，從入國到升學、就業這一新階段，更貼近學生們，培養成為在國際社會上活躍的人才。衷心期待大家的入學。

Là trường Nhật ngữ với về dày lịch sử hơn 35 năm kể từ khi thành lập. Cho đến hiện tại đã tiếp nhận học sinh từ các nước tiêu biểu như Trung Quốc, Hàn Quốc, Việt Nam, Philippines, Ấn Độ, Nepal và các nước nói tiếng Nga như Nga và Kyrgyz, cho đến các nước nói tiếng Anh. Gần đây còn có một số học sinh là những học sinh có cha mẹ đã từng học tại trường chúng tôi. Với thế mạnh là bề dày lịch sử, kinh nghiệm và thành tích lâu đời hãy để chúng tôi có thể hỗ trợ các du học sinh yên tâm học tập ngay cả khi lần đầu tiên du học tại Nhật Bản. Về mảng học tập, tập trung nghiên cứu từ các nhân viên, giảng viên giàu kinh nghiệm. Để có phương pháp học tập tiếng Nhật hiệu quả hơn. Dựa trên các tình trạng khác nhau để số hóa tài liệu giảng dạy và tổ chức học Online, v.v... Ngoài ra thực hiện đầy đủ hỗ trợ học sinh học lên cao vào các trường Đại học đang liên kết và hợp tác. Hơn thế nữa, đối với các học sinh có nguyện vọng xin việc làm tại Nhật Bản. Nhà trường còn làm việc trực tiếp với các tập đoàn, công ty để có thể hỗ trợ việc làm. Dành cho học sinh từ giai đoạn nhập cảnh Nhật Bản cho tới giai đoạn học lên cao hoặc đi xin việc làm. Phát triển nguồn nhân lực có thể đóng vai trò tích cực trong cộng đồng quốc tế. Chúng tôi chân thành mong đợi các bạn!!

POINT 2 経験豊富で親身なスタッフ・講師 Experienced and kind staff & teachers



一人ひとりの進路や目的に合わせて、学習面・生活面においてスタッフと講師が様々なサポートを行っています。中国語、ベトナム語、英語が話せるスタッフもいますので、いつでも安心して相談することができます。

Our staff and teachers will support you in various ways, whether it be studying or tips for living in Japan. We also have staff who can speak Mandarin, Vietnamese, or English, so please feel free to consult them.

POINT 3 進学に強く、実績豊富! Great on the support for the entrance exams & Excellent track record!



様々な有名大学・美術大学や専門学校へ進学するなど日本で活躍する多くの学生を輩出しています。これまで培ってきた指導経験と手厚いサポートで論文添削、書類作成、面接練習等を行い、学生の皆さんを目標達成へ導きます。

We have helped many students pass entrance exams to various famous Japanese universities, art schools, technical colleges, and more. Drawing on our long teaching experience to provide warm support, we will help you proofread your essays, create documents, and practice for interviews, to achieve your goals.

POINT 4 安心の就職サポート Reliable Employment Support



就職希望者向けにビジネスマナー講座を開設しています。講座ではビジネス日本語に加え、日本の会社での基本的なルールや礼儀作法などの指導や就職試験対策として、履歴書・エントリーシートの添削と面接練習などの個別サポートも行っています。

We hold business manner workshops for students seeking employment in Japan. In the workshops, we teach business Japanese as well as basic rules and manners in Japanese companies. We also proofread your resumes and application sheets as well as help you practice for interviews individually to prepare for them.

POINT 5 充実したコース! Fulfilling Courses!



様々な目的、ニーズに合わせ、多様なコースを揃えています。本生が通う長期コースや日本を楽しんで学ぶ短期コースの他、日本語能力試験対策クラスや会話クラスなど、希望に合わせて学習内容と時間数をカスタマイズできるクラスも併設しています。(P4,5へ!)

We have various courses to meet different goals and needs. We have long-term courses for regular students and short-term courses for those on holiday in Japan as well as JLPT classes and Practical Conversation classes. You may also customize the classes and the time you would like to attend to suit your particular needs. (go to P4&5!)



特別クラス

日本語で自由楽しく話せるようになりたい!

会話コース

- 日常生活において日本語で自然に話すことを目指す
- 様々な場面で会話を多くの人と楽しめる
- 初級会話からビジネス会話まで学べる!

For those who want to be able to enjoy speaking in Japanese freely!
JAPANESE PRACTICAL CONVERSATION COURSE

- Learn to converse naturally in Japanese in your daily life
- Enjoy conversing with many different people in various contexts
- From beginners to business conversation lessons!

STEP UP CLASS

特別クラス

日本語能力試験に合格したい!

JLPTコース

- 日本語能力試験合格(年2回)に向けた試験対策に特化したカリキュラム
- 語彙、文法、読解、聴解バランスよく学べる

For those who want to pass the JLPT exams!
JLPT COURSE

- Curriculum tailored for passing JLPT exams (held twice a year)
- Learn vocabulary, grammar, comprehension, and listening in a balanced way

STEP UP CLASS

特別クラス

短期間で日本文化に触れたい! 学びたい!!

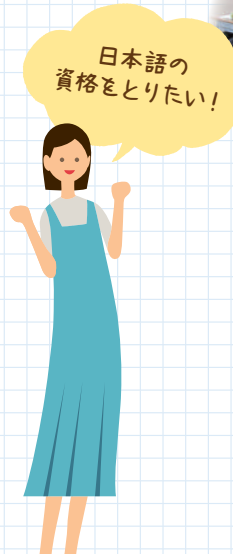
短期生・聴講生コース

- 1~3か月で日本語が学べる
- 日本文化や食文化を体験できる課外授業も充実!
- 目的や希望に合わせてカスタマイズできるカリキュラム

For those who want to experience Japanese culture for a short time period! And Learn!!
AUDIT STUDENT COURSE / SHORT-TERM INTENSIVE COURSE

- Learn Japanese in just 1-3 months
- Fulfilling co-curricular activities in which you can experience Japanese traditions and food culture!
- Customizable curriculum to fit your goals and requests

STEP UP CLASS



初級II N4レベル

BEGINNER II - N4 Level



- 日常的话题について会話することができる
- 新聞や雑誌、テレビから必要な情報を読み取ることができる
- 友人や知人への簡単な手紙を書くことができる

- Learn to converse about common topics
- Learn to pick up key information from mass media
- Learn to write simple letters to friends and acquaintances



有名大学に入りたい!



中級 N3レベル

専門学校合格レベル

INTERMEDIATE - N3 Level / Vocational School entrance level



- 事前準備し、アルバイト先や専門学校の面接で自分の思いや考えを話すことができる
- 将来の目標や希望について知っている言葉を使い話したり書いたりすることができる

- With advance preparation, communicate your thoughts and opinion at the interviews of part-time job and vocational school entrance exams.
- Learn to use and write words to describe your future goals and aspirations

中上級 N2レベル

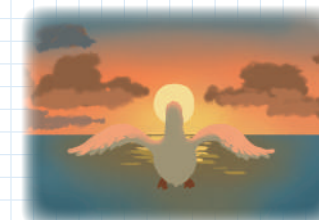
大学合格レベル

INTERMEDIATE II - N2 Level / University entrance level



- 関心がある話題について相手ができるように説明することができる
- テレビ番組やニュースを見て、だいたいの内容が理解でき説明することができる
- 大学の面接などの場面で自分が経験したことなどについて意見や感想を話すことができる

- Learn to clearly explain subjects of interest to other people
- Learn to understand and roughly explain the contents shown on TV shows and the news
- Learn to express your opinion and feelings about your experiences in university entrance interviews etc.



上級 N1レベル

有名大学合格レベル

ADVANCED - N1 Level / Prestigious university entrance level



- 相手や状況に応じて言葉を使い分けて会話することができる
- 会議や打ち合わせでプレゼンテーションをすることができる
- 論理的に自分の思いや考えを説明することができる

- Learn to converse with a variety of words according to the context
- Learn to do presentations in meetings and discussions
- Learn to elaborate on your opinions and belief logically



● 2021年卒業生 作品
Artwork by graduate of 2021

本科生コース

REGULAR COURSE

初級I N5レベル

BEGINNER I - N5 Level



- 日本で生活するための基本的な会話ができる
- 丁寧な会話とカジュアルな会話の違いを理解し、使い分けることができる
- 簡単な自己紹介や簡単なメモを書くことができる

- Learn basic Japanese for living in Japan
- Understand how to differentiate and use between polite and casual forms of Japanese language
- Learn to briefly introduce yourself and write simple memos



特別クラス

有名大学を目指したい!

進学コース〈大学・専門学校〉

- 専門学校、有名大学の合格を目指す
- 一人ひとりの能力や目的に合わせたカリキュラム

For those aiming to enter prestigious universities!
ADVANCED COURSE FOR UNIVERSITIES AND COLLEGES

- Study to pass entrance examinations for vocational schools or prestigious universities
- Curriculum tailored to each student's abilities and goals

STEP UP CLASS

特別クラス

クリエイター、アニメーター、芸術家を目指したい!

美術進学コース

- デッサン、色彩構成、平面構成などの基礎力を身につける
- 美術大学や大学院合格のためのカリキュラム
- 日本語クラスと両立できるスケジュール

For those aiming to become creators, animators, or artists!
ART UNIVERSITY PREPARATORY COURSE

- Learn the basics of sketching, coloring, and composition
- Curriculum focused on passing entrance examinations for art school undergraduate or postgraduate programs
- Schedule is tailored to allow attendance to Japanese classes too

STEP UP CLASS

スクールイベント - SCHOOL EVENT



4月 // April



歌舞伎観劇(国立劇場)
Kabuki watching (National Theater)



5月 // May



防災体験(本所防災館)
Disaster prevention experience



7月 // July



七夕飾り
Tanabata decoration



9月 // September



スポーツ大会(深川スポーツセンター)
Sports competition (Fukagawa Sports Center)



10月 // October



浅草観光(浅草寺)
Asakusa Trip (Sensoji Temple)



深川散歩
Fukagawa walk

11月 // November



ディズニーリゾート
Disney Resort



1月 // January



着物体験
Kimono Experience



2月 // February



富士急ハイランド
Fuji-Q Highland



当校沿革 - OUR SCHOOL'S HISTORY

1984 学旺日本語学校として開校

1 Started as Gakuoh Japanese Language School

1989 東京都江戸川区西小岩に新校舎開校

4 New school building opened at Nishi Koiwa, Edogawa, Tokyo

1990 財団法人日本語教育振興協会より認定

4 Accreditation from Association for the Promotion of Japanese Language Education

2004 設置者名称・設置代表者の変更申請

2 現在の設置者である有限会社東京キャリアインターナショナルに変更
現在の設置代表者である泉岡春美に変更

Application for change of ownership & representative
Ownership transferred to the current Tokyo Career International Ltd.
Representative changed to the current headmaster, Harumi Izuoka

2004 財団法人日本語教育振興協会より認可

3 Received license from Association for the Promotion of Japanese Language Education

2004 学旺日本語学校から東京日英学院に校名変更

4 School name changed from Gakuoh Japanese Language School to Tokyo JE Language School

2005 位置変更・収容定員の変更申請

12 東京都江東区木場2-19-1に移転

Applied for the change of address & student capacity
Moved to 2-19-1, Kiba, Koto-ku, Tokyo

2015 位置変更・収容定員の変更申請

10 東京都江東区木場5-11-13に移転

Applied for the change of address & student capacity
Moved to 5-11-13, Kiba, Koto-ku, Tokyo

2017 日本国法務省出入国在留管理庁2016年策定の日本語教育機関の告示基準に適合

8 Deemed compliant with official standards for Japanese Language Education Institutions formulated in 2016 by the Immigration Services Agency within the Ministry of Justice of Japan.

2020 各種進学コースの開講

1 Started a variety of University Preparatory Courses



学生寮 - STUDENT DORMITORIES

東京日英には学校の近くに2つの学生寮があります。近くには商店街や飲食店も多く、非常に便利です。また、Wi-Fiを完備し、備え付けの家具もあるので、入居してすぐに生活ができます。

Tokyo JE has 2 student dormitories nearby. There is a commercial area and many restaurants nearby, so it is very convenient. Additionally, it is fully equipped with Wi-Fi and furniture, so you can settle in immediately.

学校附近有两个宿舍。宿舍附近有很多购物商店街和餐厅，非常方便。此外，宿舍配备有Wi-Fi并配备了家具，因此您搬入后可立即居住。

Tokyo JE có hai kí túc xá ở gần trường học. Bên cạnh có phố mua bán và nhiều các nhà hàng quán ăn. Rất tiện lợi. Ngoài ra còn lắp đặt sẵn Wi-fi và các đồ dùng cần thiết. Học sinh có thể bắt đầu cuộc sống một cách dễ dàng.



左：葛西寮
下：牡丹寮
Left: Kasai Dormitory
Bottom: Botan Dormitory

募集要項

願書等出願書類一式

→(①入学願書 ②履歴書 ③就学理由書 ④経費支弁書 ⑤経費支弁者の家族一覧)

進学コース募集要項

美術進学コース募集要項

JLPTコース募集要項

会話コース募集要項

その他